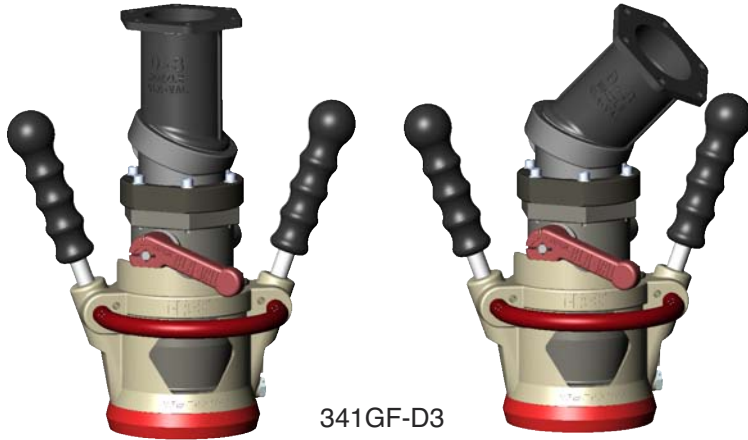




— MODEL — **341GF-D3**

Military Refueling Nozzle



341GF-D3

- D-3 Swivel Adjusts to Reduce Hose Stress
- Lowest Nozzle Pressure Drop
- Conforms to SAE-AS5877
- Connects to MS24484 Single Point Adapter
- All Aluminum and Stainless Steel Construction
- Compact Swivel for Easier Aircraft Connections
- Safety Interlock with Square Pins
- Proper Attachment Required to Open the Nozzle
- Convenient Guard Bar Hand Grip
- Guard Bar Protects Operating Handle

The Cla-Val Model 341GF-D3 Nozzle is an “underwing” refueling nozzle for pressure fuel servicing of fixed wing aircraft, other types of aircraft, and for bottom loading of tank trucks. The Model 341GF-D3, fitted with the D-3 Swivel Inlet, replaces both the D-1 and D-2 nozzles. The 341GF-D-3 Nozzle is equipped with a unique inlet assembly that adjusts to connect to adapters located on the fuselage and/or under wing. By twisting the inlet assembly, it quickly and easily changes from 0° to 45° configurations, or any configuration in between.

To ensure maximum safety during refueling, the Cla-Val 341GF-D3 Nozzle has primary and secondary interlock systems. The primary interlock ensures that the nozzle cannot be opened when it is not connected to an aircraft adapter. The secondary interlock protects the 341GF-D3 Nozzle from hazards of interfacing with badly worn aircraft adapters. Even when used with a badly

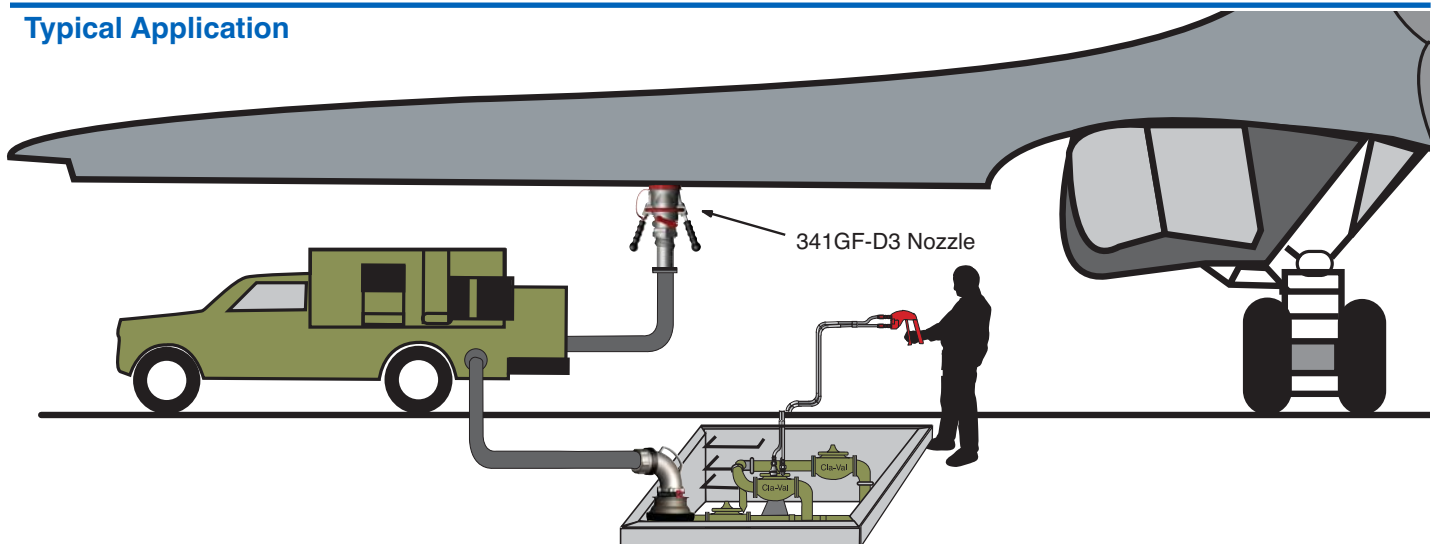
worn adapter, the nozzle is safer because it uses square register pins that provide positive alignment with the square slots in the adapter. In addition, the nozzle cannot be removed from the adapter until the operating lever is rotated to the fully-closed position.

To achieve maximum strength and durability, the Cla-Val 341GF-D3 Nozzle uses a stainless steel bayonet ring cast within the aluminum collar of the nozzle. The crank shaft of the nozzle extends across the entire width of the interior flow path and is supported from end-to-end by a structural wall that splits the flow path. This wall supports the crank shaft while straightening the flow and keeping flow resistance as low as possible. The 341GF-D-3 inlet assembly includes two compact swivel joints that allow the nozzle to swivel on the delivery hose or pantograph, resulting in easier connections regardless of the orientation of the aircraft adapter.

To reduce aircraft refueling times, the flow resistance though the Cla-Val 341GF-D3 Nozzle has the lowest head loss, which means it can fill an aircraft faster than any other nozzle.

Many accessories are available for the 341GF-D3 Nozzle. Hose End Pressure Control Valves (HEPCV) are available in 35 psi, 45 psi and 55 psi settings. A Strainer, fitted either to a Male QD Adapter or a Strainer Ball Valve, is available with 40, 60 and 100 mesh screens. A Strainer Ball Valve allows for the inspection and cleaning of the Strainer without spilling a single drop of fuel. Dry Break Quick Disconnects are available with 2-inch, 2.5 inch and 3-inch threads in both NPT and BSPP. A Vacuum Breaker, Bonding Cable and Storage Bar are also available options. Please refer to the drawing and model numbering scheme on the back of this sheet.

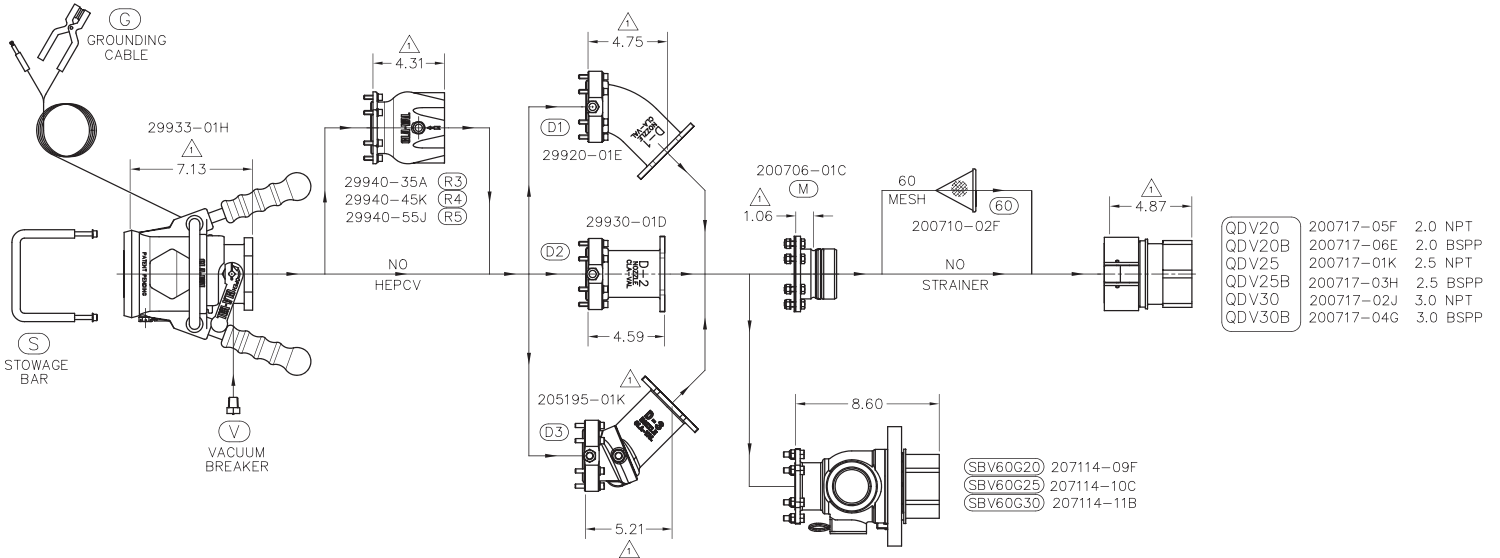
Typical Application



341GF-D3 Nozzle

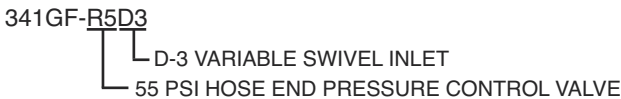
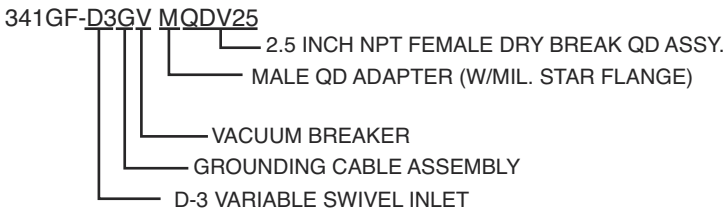
Military Refueling Nozzle

Model Numbering Scheme



Create Complete Model Numbers for Various Applications

It is easy to "customize" a 341GF-D3 to special requirements. Complete model numbers always begin with "341GF-D3". Add your option selections to this base model number, following the flow chart above from left to right. See example below.



AVAILABLE OPTIONS ADDED TO 341GF-

G	Ground Cable Assembly
V	Vacuum Breaker
R3	35 PSI Pressure Regulator
R4	45 PSI Pressure Regulator
R5	55 PSI Pressure Regulator
D-3	D-3 Variable Swivel Inlet
M	Male Quick Disconnect Adapter (Mil. Star Flange)
40	40 Mesh Strainer
60	60 Mesh Strainer
100	100 Mesh Strainer
SBV40	Strainer Ball Valve w/40 Mesh Strainer
SBV60	Strainer Ball Valve w/60 Mesh Strainer
SBV100	Strainer Ball Valve w/100 Mesh Strainer
QDV25	2.5 Inch NPT Female Dry Break QD Assy.
QDV30	3 Inch NPT Female Dry Break QD Assy.
QDV25B	2.5 Inch BSPP Female Dry Break QD Assy.
QDV30B	3 Inch BSPP Female Dry Break QD Assy.
SBV60G20	349GF GF Strainer Ball Valve
SBV60G25	349GF GF Strainer Ball Valve
SBV60G30	349GF GF Strainer Ball Valve

Operating Temperature Range

-40 to +130° F